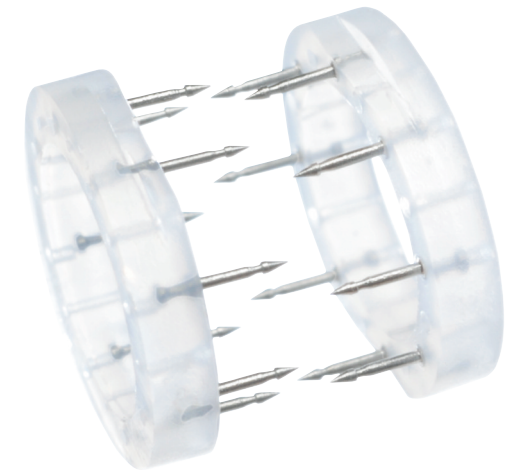
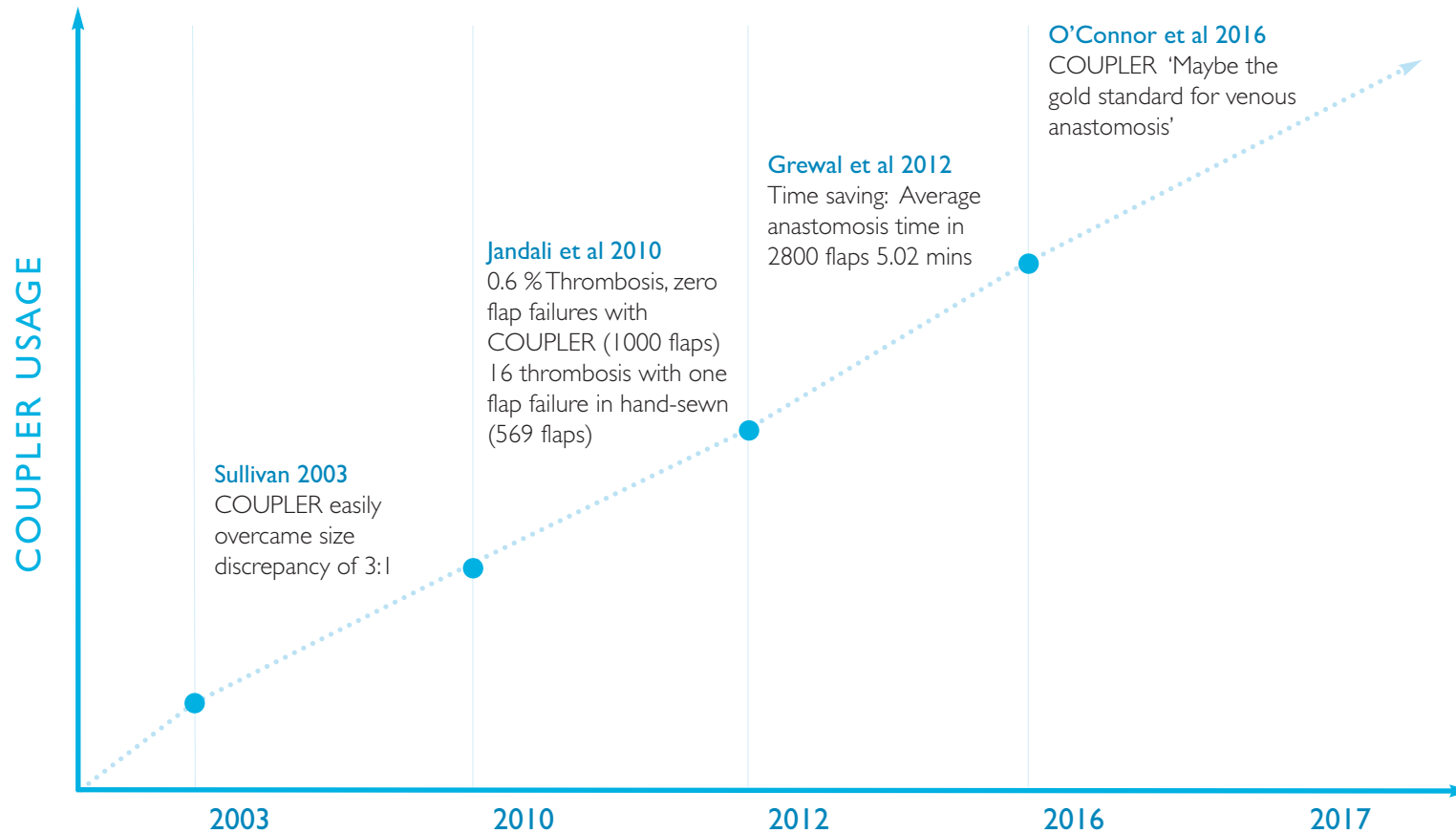


EVIDENCE



SURGEON QUOTES

Consultant Plastic Surgeon

The venous COUPLER has become an indispensable tool for my high volume microsurgical practice. It significantly reduces anastomotic times and is particularly useful for complex cases where vein grafts are required. I have not experienced a venous thrombosis since using the COUPLER.

Consultant Maxfax Surgeon

Early experience with the venous Flow COUPLER would suggest that it is very reliable as an anastomotic device and accurate in early detection of flap compromise, allowing prompt successful free flap salvage.

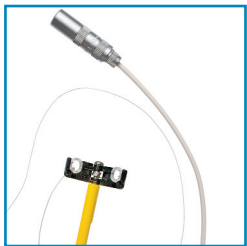
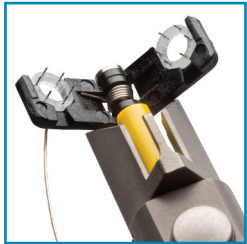
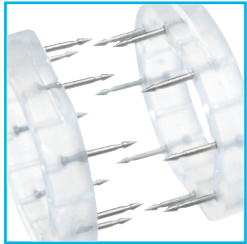
Consultant Maxfax Surgeon

The availability of the COUPLER system for selected cases holds clear benefit for patient, the surgical team and the broader unit/hospital

Consultant Plastic Surgeon The best medical device I've come across. Reliable, effective, cost-effective. I wouldn't operate without it!

Consultant Plastic Surgeon

Since I started using the COUPLER five years ago, I have reached a stage where venous anastomosis is only done with a COUPLER. The ease of its use, especially in difficult access points, is obvious. The time saving and patency improvement were audited in our series of over one thousand cases and the venous coupler proved invaluable in limiting venous complications.



GEM COUPLER

- GEM2750 1.0mm vessel range 0.8mm - 1.2mm box of 6
- GEM2751 1.5mm vessel range 1.3mm - 1.7mm box of 6
- GEM2752 2.0mm vessel range 1.8mm - 2.2mm box of 6
- GEM2753 2.5mm vessel range 2.2mm - 2.8mm box of 6
- GEM2754 3.0mm vessel range 2.7mm - 3.3mm box of 6
- GEM2755 3.5mm vessel range 3.2mm - 3.8mm box of 6
- GEM2756 4.0mm vessel range 3.7mm - 4.3mm box of 6
- GEM2750/I 1.0mm vessel range 0.8mm - 1.2mm single
- GEM2751/I 1.5mm vessel range 1.3mm - 1.7mm single
- GEM2752/I 2.0mm vessel range 1.8mm - 2.2mm single
- GEM2753/I 2.5mm vessel range 2.2mm - 2.8mm single
- GEM2754/I 3.0mm vessel range 2.7mm - 3.3mm single
- GEM2755/I 3.5mm vessel range 3.2mm - 3.8mm single
- GEM2756/I 4.0mm vessel range 3.7mm - 4.3mm single
- GEM2741CC **Complete Synovis set inc each of the following components:**
- GEM2740 Reusable titanium tipped anastomotic Inst.
- GEM2745 Anodised aluminium sterilisation/storage tray
- GEM2749 Stainless steel vessel measuring gauge
- GEM4183C COUPLER forceps, 18cm for everting vessel

GEM FLOW COUPLER

- GEM1020M FLOW COUPLER monitor
- GEM1010UK UK power supply and cord
- GEM1003EXT-FC External lead
- GEM2760-HH Intraop doppler
- GEM2752-FC FLOW COUPLER 2.0mm
- GEM2753-FC FLOW COUPLER 2.5mm
- GEM2754-FC FLOW COUPLER 3.0mm
- GEM2755-FC FLOW COUPLER 3.5mm

GEM MicroClip

- GEM615-IG MicroClip applier 15cm
- GEM619-IG MicroClip applier 19cm
- GEM715-SF SuperFine MicroClip applier 15cm
- GEM719-SF Superfine MicroClip applier 19cm
- GEM2431 MicroClip cartridges, 5 per box, 6 clips in each
- GEM1521 SuperFine MicroClip cartridges, 5 per box, 6 clips in each

For more information on the Synovis GEM COUPLER or to order, please contact:

Severn Healthcare Technologies Limited

42 Kingfisher Court, Hambridge Road, Newbury, Berkshire RG14 5SJ

Telephone: 01635 887640 **Fax:** 01635 552684 **Email:** service@severnhealthcare.com