



Severn Healthcare Technologies Limited

42 Kingfisher Court, Hambridge Road, Newbury, Berkshire, RG14 5SJ

Telephone: 01635 887640 Fax: 01635 552684

Email: service@severnhealthcare.com

Severnhealthcare.com

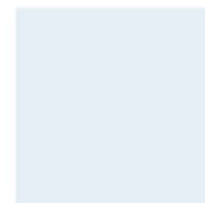
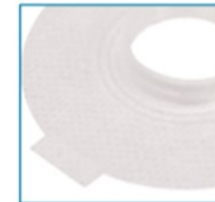
Images supplied with friendly permission of Andreas Fahl Medizintechnik-Vertrieb GmbH,
Cologne, Germany and by kind permission of InHealth Technologies

Last updated: 11.10.2023



Severn Healthcare Technologies

PRESCRIPTION ITEMS



CONTENTS:

INTRODUCTION	Page 2
LARYNGECTOMY:	
FAHL® HME	Page 3-6
BLOM-SINGER® HME SYSTEM	Page 7-12
BLOM-SINGER® ADHESIVE BASE PLATES:	Page 13-14
FAHL® ADHESIVE BASE PLATES	Page 15-18
TRACHEOSTOMA HOUSING & ADHESIVE DISCS	Page 19-20
BASE PLATE OPTIONS	Page 21
STOMA BUTTONS	Page 22
LARYNGECTOMY TUBES:	
BLOM-SINGER® STOMASOFT™ HME COMPATIBLE	
LARYNGECTOMY TUBES	Page 23
LARYNGOTEC® HME COMPATIBLE SILICONE TUBES	Page 24-25
LARYNGECTOMY TUBE HOLDERS	Page 26
BRUSHES & ACCESSORIES	Page 27-29
TRACHEOSTOMY:	Page 30
DURATWIX®	Page 31-33
TRACHEAL COMPRESSES	Page 34
TRACHEOSTOMY SPEAKING VALVE	Page 35-36
TRACHEOSTOMY TUBE HOLDERS	Page 37-38
DISPENSING APPLIANCE CONTRACTORS (DACs)	Page 39-40

INTRODUCTION

Severn Healthcare is a British company with experienced healthcare personnel under the leadership of George Strang, who has over two decades of experience and expertise in the distribution of Surgical Voice Restoration products and accessories, HME and tracheostoma care and ENT products.

The Severn Healthcare team is proud to include a team of qualified Speech and Language Therapists (SLT's), specialised in the assessment and rehabilitation of people with a head and neck cancer diagnosis. We offer advice, support and training as needed for clinicians and the laryngectomy community.

We are delighted to provide you an overview of our tracheostoma products and accessories that are available on prescription. We pride ourselves on the partnerships that we have developed with InHealth Technologies and Andreas Fahl GmbH, companies that have many years of pioneering innovation and in improving the experience for individuals following total laryngectomy and tracheostomy.

InHealth Technologies have been providing the Voice of Experience to the laryngectomy community worldwide since 1978, through their market leading Blom-Singer® range. InHealth has a long history of innovative product development and are dedicated to putting the needs of their customers first, so that they can improve the quality of their daily lives. We are proud to provide their industry leading products for tracheoesophageal speech, including the **NEW Blom-Singer® SpeakFree™ HME Hands Free Valve** - the first heat and moisture exchange (HME) cartridge with a single-use fully integrated adjustable hands free valve. The Blom-Singer® SpeakFree™ HME Hands Free Valves together with the Fit Series (HydroFit™ & AccuFit™) baseplates, StomaSoft™ laryngectomy tubes and the Blom-Singer® HME options provide an industry leading range of tracheoesophageal care products.

We are also proud to provide the Andreas Fahl GmbH range of products and solutions for airway management and respiratory care, particularly for the management of patients following tracheostomy and laryngectomy surgery. Andreas Fahl were founded in 1992 and have a true understanding of the needs of the tracheostomy and laryngectomy patient.

For over 20 years Andreas Fahl have been an invaluable partner for patients, clinicians and healthcare providers across Europe and Severn Healthcare are delighted to provide their extensive range of high-quality rehabilitation products here in the United Kingdom, including ***next generation solutions for laryngectomy care such as the LARYVOX® EXTRA HME – the first HME cassette to be available in FOUR levels of airflow resistance.***

We hope that this booklet provides you with information on the products that you require, however should you have any additional queries then please contact us at:

[Severn Healthcare Technologies Limited](#)

Telephone: 01635 887640; Email: service@severnhealthcare.com; severnhealthcare.com

FAHL HME SYSTEM

LARYVOX® EXTRA HME

The Next Generation of LARYVOX® HME

The first HME cassette to be available in FOUR different resistance levels: Standard, Medium, HighFlow and Sport to suit individual activities and requirements.

- It filters, warms and humidifies the respiratory air.
- An easy to operate speaking option for patients with a voice prosthesis.
- An unobtrusive, inconspicuous design.

Order ref: 49860, Standard, Box of 30



Order ref: 49862, Medium, Box of 30



Order ref: 49861, HighFlow, Box of 30



HUMIDOTWIN® HME

A Heat & Moisture Exchange (HME) filter cassette.

HUMIDOTWIN® HME features the Fahl Multi-Adapter that enables placement in all laryngectomy 22 mm housings commonly used in baseplates, laryngectomy tubes and stoma buttons.

HUMIDOTWIN® HME is low profile, light-weight and inconspicuous; the foam filter is made from an open pore, polyurethane.

HUMIDOTWIN® HME also features an overpressure valve to enable unimpaired coughing – ideal for night-time use.

Order Ref: 46460, Box of 30



Fahl HUMIDOTWIN® HME are provided in boxes of 30; cassettes are individually packed in convenient peel-packs. Non-Sterile.

FAHL HME SYSTEM

LARYVOX® EXTRA HME SPORT

- Being a HME cassette that provides a very low respiratory resistance, the LARYVOX® EXTRA HME SPORT is well suited for use in sporting activities.
- LARYVOX® EXTRA HME SPORT incorporates a discrete design with ease of occlusion for those who wish to use it for speech.
- The lateral openings of the LARYVOX® EXTRA HME SPORT allow for unimpaired and easy breathing – even beneath clothing.

Order ref: 49863, Sport, Box of 30



FAHL HME SYSTEM

LARYVOX® HME

An excellent HME cassette, designed to reduce mucus production, coughing and chest infections. 24 hour use also helps to improve sleep and reduce levels of fatigue in patients post-laryngectomy.

Order ref: 49800 ☐



LARYVOX® HME HIGHFLOW

The LARYVOX® HME HIGHFLOW offers low airflow resistance so is very easy to breathe through. This makes it the perfect choice for individuals who are new users of HME, in particular those who may be switching from a foam stoma protector or a bib.

Order ref: 49810 ☐



LARYVOX® O2 HME

LARYVOX® O2 HME provides a unique combination of LARYVOX® HME with an O2 connection, ideal for the patient who requires supplementary oxygen, for example in the post-operative setting. As with the LARYVOX® HME it provides an excellent level of heat and moisture exchange, designed to reduce mucus production, coughing and chest infections. 24 hour use also helps to improve sleep and reduce levels of fatigue in patients post-laryngectomy.

Order ref: 49802 ☐



Fahl LARYVOX® HME, LARYVOX® HME HIGHFLOW & LARYVOX® O2 HME are provided in boxes of 30; Non-Sterile.

FAHL HME SYSTEM

LARYVOX® TOUCH HME HIGHFLOW

- A Heat and Moisture Exchange (HME) cassette range with low-pressure finger-occlusion technology.
- Combines the advantages of a HME with hygienic finger occlusion and an appealing design.
- A HighFlow HME range with low respiratory resistance, suitable for new users of HME cassettes or during physical exertion.
- The HME features a sealing plate to guarantee easy occlusion during speech.
- Side Vented to enable ease of breathing even if worn beneath clothing.
- A HME range that can be used with all LARYVOX® Tape base plates or LARYNGOTEC® KOMBI laryngectomy tubes and stoma buttons as well as most base plate systems, tubes and buttons from other manufacturers e.g. Blom-Singer®.
- The LARYVOX® TOUCH HME HighFlow range is available in 4 different colours: gold, silver, beige and clear.

Colour	Order ref
Gold	49850-02
Silver	49850-03
Beige	49850-04
Clear	49850-13



Gold



Silver



Beige



Clear

BLOM-SINGER HME SYSTEM

NEW BLOM-SINGER® DAY&NIGHT™ HME HEAT AND MOISTURE EXCHANGE CASSETTES

Day&Night™ HME. It's our newest innovation that you can wear comfortably all day and all night – including at bedtime.

**One HME
that fits
your lifestyle**

Love the simplicity. Love the innovation.



BLOM-SINGER HME SYSTEM

BLOM-SINGER® DAY&NIGHT™ HME WITH CLASSICFLOW® HME

Helps assure you breathe warmed, filtered and humidified air - all day, every day - to reduce respiratory symptoms after a total laryngectomy

ClassicFlow is designed for increased moisture retention and resistance

Order ref: BE 1091, Box of 30



BLOM-SINGER® DAY&NIGHT™ HME WITH EASYFLOW® HME

The foam filter allows you to breathe more freely to match your activity level and pulmonary needs

Order ref: BE 1092, Box of 30



BLOM-SINGER HME SYSTEM

BLOM-SINGER® CLASSICFLOW® & EASYFLOW® HME CASSETTES

Features & Benefits:

- **Mucus Shield Technology** - designed to protect the foam filter from mucus
- **24 Hour use** - daily disposable, 24 hour use devices. Side vents aid in night time use
- **Easy Touch Technology** - pressing anywhere on the upper surface creates a complete seal for voicing

BLOM-SINGER® CLASSICFLOW® HME CASSETTE

ClassicFlow® HME helps assure you breathe warmed, filtered and humidified air - all day, every day - to reduce respiratory symptoms after a total laryngectomy

ClassicFlow is designed for increased moisture retention and resistance

- Less mucus
- Less coughing
- Less risk of shortness of breath, fatigue and sleep problems

Order ref: BE 1055 EZ, Box of 30



BLOM-SINGER® EASYFLOW® HME CASSETTE

The foam filter allows you to breathe more freely to match your activity level and pulmonary needs

- The EasyFlow HME has a non-reflective beige tint
- Reduced airflow resistance therefore easy to breathe through
- An ideal starting point for all new users of HME's or those who are used to wearing bibs
- Used during more strenuous physical exertion

Order ref: BE 1055 EF, Box of 30



BLOM-SINGER HME SYSTEM

BLOM-SINGER® REPLACEMENT FOAM FILTERS (FOR NON-ATSV II USERS)

Specially treated foam discs that fit ONLY with the HumidiFilter Holder (BE1060)

These filters do NOT fit with the ATSV II HumidiFilter Cap (BE 1010)

Order ref: BE 1080, Box of 30



HANDS-FREE SPEECH

BLOM-SINGER® SPEAKFREE™ HME HANDS FREE VALVE

New Blom-Singer® SpeakFree™ HME Hands Free Valve is the first heat and moisture exchange (HME) cartridge with a single-use fully integrated adjustable hands free valve.

FEATURES:

- Choose your flow and go. Two simple choices for your breathability. ClassicFlow or EasyFlow.
- Truly innovative. One adjustable valve with hands free speech that adjusts from light to extra strong.
- Freedom of choice. Attaches to Blom-Singer® adhesive housings or a Blom-Singer® Stomasoft Laryngectomy Tube.

Blom-Singer® SpeakFree™ HME Hands Free Valve with ClassicFlow® HME

- Breathe healthy
- ClassicFlow helps assure you breathe warmed, filtered and humidified air, every day, to reduce respiratory symptoms after a total laryngectomy. ClassicFlow is designed for increased moisture retention and resistance.



Order ref: BE 1090EZ, box of 30

Blom-Singer® SpeakFree™ HME Hands Free Valve with EasyFlow® HME

- Breathe easier at work or play
- With EasyFlow, the foam filter is more porous than the ClassicFlow. This allows you to breathe more freely to match your activity level and pulmonary needs.



Order ref: BE 1090EF, box of 30

HANDS-FREE SPEECH

BLOM-SINGER® HANDS-FREE (ATSV II) SYSTEM

BLOM-SINGER® HUMIDIFILTER® ATSV II CAP & 7 FOAM FILTERS

The HumidiFilter ATSV II Cap is a twist-on plastic filter cap that fits over the ATSV II. It is designed to help keep the ATSV II foam filters in place and comes with 7 specially treated HME Foam filters.

Order ref: BE 1010



BLOM-SINGER® REPLACEMENT FOAM FILTERS (FOR ATSV II USERS)

Specially treated foam discs that fit ONLY with the Humidifier ATSV II Cap (BE 1010).

Order ref: BE 1030

Blom-Singer® replacement foam filters come boxed in packs of 30. Non-sterile

ADHESIVE BASE PLATES

BLOM-SINGER® HYDROFIT® HYDROCOLLOID ADHESIVE HOUSING

The Blom-Singer® HydroFit Adhesive Housing is a hydrocolloid adhesive baseplate made with a protective gel-like layer and a moisture-absorbent adhesive.

The HydroFit is gentle on the skin and flexible, but maintains strong adhesion.

Available in three shapes: round, oval, and oval extra.

Box of 30

Order ref: Round	BE 6085	<input type="text"/>
Order ref: Oval	BE 6086	<input type="text"/>
Order ref: Oval Extra	BE 6087	<input type="text"/>



ADHESIVE BASE PLATES

BLOM-SINGER® ACCUFIT® ADHESIVE HOUSING

The Blom-Singer® AccuFit Adhesive Housing is designed to be our strongest adhesive option while still maintaining flexibility.

It has increased elasticity and is less prone to tearing.

Available in three shapes: round, oval, and oval extra.

Box of 30.

Order ref: Round	BE 6082	<input type="text"/>
Order ref: Oval	BE 6083	<input type="text"/>
Order ref: Oval Extra	BE 6084	<input type="text"/>



ADHESIVE BASE PLATES

FAHL LARYVOX®

LARYVOX® Tape Hydrosoft

The Hydrosoft base plate is made of a soft, hydrocolloid material and incorporates a very mild adhesive.

Order ref: Round 48130



Order ref: Oval 48230



Order ref: XL Oval 48330



All Fahl base plates are individually wrapped. Available in boxes of 15. Non-sterile

ADHESIVE BASE PLATES

LARYVOX® Tape Hypoallergen

A unique comfortable and flexible base plate. Designed for patients with skin sensitivities or skin reactions but also offers a strong adhesion.

Order ref: Round 48050



Order ref: Oval 48150



Order ref: XL Oval 48250



All Fahl base plates are individually wrapped. Available in boxes of 15. Non-sterile

ADHESIVE BASE PLATES

LARYVOX®TAPE STANDARD

The Standard base plate range offer excellent adhesive strength and are:

- *Transparent*
- *Water-Repellent*
- *Available in 3 Shapes:*

Order ref: Round 48100 ☐

Order ref: Oval 48200 ☐

Order ref: X Oval 48300 ☐



LARYVOX®TAPE FLEXIBLE

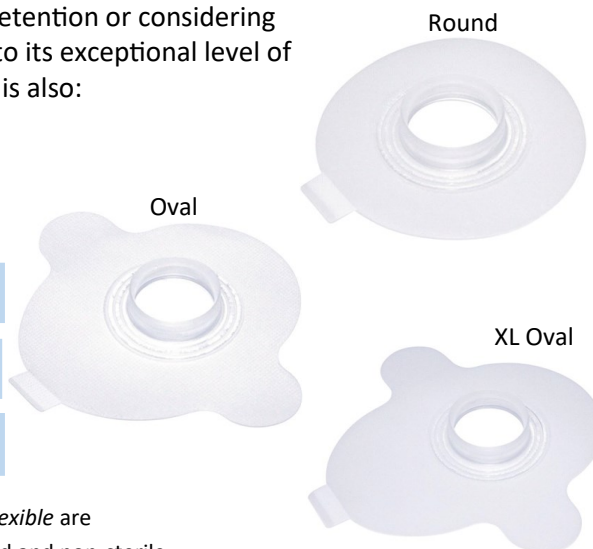
A unique comfortable and flexible base plate range with the highest adhesive strength, ideal for those individuals demonstrating issues with base plate retention or considering use of hands-free system. In addition to its exceptional level of adhesion the Flexible base plate range is also:

- *Transparent*
- *Water-Repellent*
- *Available in 3 Shapes:*

Order ref: Round 48120 ☐

Order ref: Oval 48220 ☐

Order ref: XL Oval 48320 ☐



LARYVOX®Tape Standard and LARYVOX®Tape Flexible are available in boxes of 15, are individually wrapped and non-sterile

ADHESIVE BASE PLATES

LARYVOX®TAPE COMFORT

A comfortable, tinted base plate which adapts well to the contours of the skin. With the strongest level of adhesion it makes an ideal choice for patients experiencing issues with base plate retention or who wish to trial a Hands-Free system e.g. the Blom-Singer ATSV II.

Order ref: Round 48140 ☐

Order ref: Oval 48240 ☐

Order ref: XL Oval 48340 ☐



LARYVOX®TAPE EXTRA FINE

A unique transparent, strong, waterproof base plate that provides long lasting adhesion. The ultra thin, transparent material adapts well to all tracheostomal conditions, making it an ideal choice for those patients with an irregular or recessed stoma.

Order ref: 48400 ☐



All Fahl base plates are individually wrapped. Boxed in pks of 15. Non-sterile

TRACHEOSTOMA HOUSING & ADHESIVE DISCS

BLOM-SINGER® TRACHEOSTOMA VALVE HOUSING

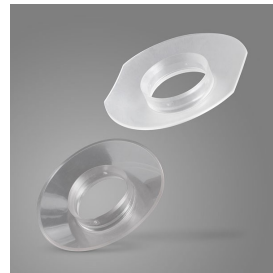
The Tracheostoma Valve Housing is a reusable, flexible housing that attaches the ATSV II, HME cartridge or shower guard over the stoma. It is applied with separate adhesive tape discs and silicone adhesive. It is available in two sizes, standard and large.

Tracheostoma Valve Housing, standard x 1

Order ref: BE 6038

Tracheostoma Valve Housing, large x 1

Order ref: BE 6039



All Blom-Singer® Tracheostoma valve housings are individually wrapped. Non-sterile

BLOM-SINGER® ADHESIVE DISCS

A variety of double-sided adhesive foam and tape discs are available to provide attachment of the tracheostoma valve housing to your stoma.

Regular tape discs, standard

Order ref: BE 6041

Regular tape discs, large

Order ref: BE 6042

Thin tape discs, standard

Order ref: BE 6043

Thin tape discs, large

Order ref: BE 6044

Heavy duty tape discs, standard

Order ref: BE 6034

Heavy duty tape discs, large

Order ref: BE 6035

All Blom-Singer® Adhesive discs boxed in packs of 30. Non-sterile

ADHESIVE DISCS

LARYVOX® ADHESIVE FOAM DISCS

The LARYVOX® Adhesive Foam Disc is a foam ring with a central circular opening. The front and back are provided with an adhesive surface covered by a protective film.

It is used to align the skin level of an irregular tracheostoma that is situated below the skin level and thus creates a flatter surface for the fixation of a base plate.

In combination with LARYVOX® Tape or a sealing plate, the contact surface of the tape optimised, thus enabling a longer wearing time.

The speaking option is improved by exclusion of undesired losses of air.

The different size versions small (REF 48460) and large (REF 48461) serve for individual adaptation in order to achieve an even skin level to be covered with LARYVOX® Tape.

Order ref: 48460, Small, Pack of 30

Order ref: 48461, Large, Pack of 30



BASE PLATE OPTIONS

Base Plate	Post-op	Sensitive skin	Irregular area around stoma	Recessed stoma	Stronger adhesive needs	Discrete	Hands-Free	Night-time use	Exercise
HydroFit	✓	✓				✓	✓	✓	✓
Hypo - allergen		✓						✓	
AccuFit			✓	✓	✓	✓	✓	✓	✓
Comfort			✓	✓	✓	✓		✓	✓
Extra fine			✓	✓	✓	✓			
Tracheostoma Valve Housing			✓	✓		✓	✓		

Additional information on the Blom-Singer® and Andreas Fahl products can be found on our website severnhealthcare.com

Further information, support and educational resources can also be obtained via the Severn Healthcare Laryngectomy Forum. You can sign up to the forum by going to:

<http://www.severnhealthcare.com/community/>

and clicking on the sign up tab in the top right hand corner of the screen.

STOMA BUTTONS

LARYNGOTEC® KOMBI STOMA BUTTON FIX

Stoma button to keep the tracheostoma of laryngectomised patients open while minimising the contact surface with the delicate tracheal mucosa.

- *Transparent*

- *Available in size 8-11*

Size	O.D neck Flange mm	I.D mm	Length mm	Version	Fix Order Ref	
8	11.0	8.0	22	Standard	15950-08	<input type="text"/>
9	12.0	9.0	22	Standard	15950-09	<input type="text"/>
10	13.0	10.0	22	Standard	15950-10	<input type="text"/>
11	14.0	11.0	22	Standard	15950-11	<input type="text"/>
12	15.0	12.0	22	Standard	15950-12	<input type="text"/>
8	11.0	8.0	15	Short	15960-08	<input type="text"/>
9	12.0	9.0	15	Short	15960-09	<input type="text"/>
10	13.0	10.0	15	Short	15960-10	<input type="text"/>
11	14.0	11.0	15	Short	15960-11	<input type="text"/>
12	15.0	12.0	15	Short	15960-12	<input type="text"/>

Fahl LARYNGOTEC Kombi Stoma Button Fix are supplied in individual packaging with tube holder & I.D. card. Sterile

LARYNGECTOMY TUBES

BLOM-SINGER® STOMASOFT™ HME COMPATIBLE LARYNGECTOMY TUBE

Key Features:

- A Laryngectomy tube made from lightweight, extra soft, and durable silicone.
- Reinforced strap holders to reduce the risk of breakage..
- Compatible with most HME cassettes; with specially designed recesses incorporated in the housing to aid ease of HME placement and removal.
- Fenestrated or Unfenestrated variants available.
- 4 Sizes (8, 9, 10 & 12) outer diameters ranging from 12 to 17mm.
- 2 Length options (36mm and 55mm).

Size	ID/OD mm	Fenestration	Order ref	
8/36	9.5/12.0	Non-fenestrated	BE 6698	<input type="checkbox"/>
8/55	9.5/12.0	Non-fenestrated	BE 6699	<input type="checkbox"/>
9/36	10.5/13.5	Non-fenestrated	BE 6700	<input type="checkbox"/>
9/55	10.5/13.5	Non-fenestrated	BE 6701	<input type="checkbox"/>
10/36	12.0/15.0	Non-fenestrated	BE 6702	<input type="checkbox"/>
10/55	12.0/15.0	Non-fenestrated	BE 6703	<input type="checkbox"/>
12/36	13.5/17.0	Non-fenestrated	BE 6704	<input type="checkbox"/>
12/55	13.5/17.0	Non-fenestrated	BE 6705	<input type="checkbox"/>
8/36	9.5/12.0	Fenestrated	BE 6698F	<input type="checkbox"/>
8/55	9.5/12.0	Fenestrated	BE 6699F	<input type="checkbox"/>
9/36	10.5/13.5	Fenestrated	BE 6700F	<input type="checkbox"/>
9/55	10.5/13.5	Fenestrated	BE 6701F	<input type="checkbox"/>
10/36	12.0/15.0	Fenestrated	BE 6702F	<input type="checkbox"/>
10/55	12.0/15.0	Fenestrated	BE 6703F	<input type="checkbox"/>
12/36	13.5/17.0	Fenestrated	BE 6704F	<input type="checkbox"/>
12/55	13.5/17.0	Fenestrated	BE 6705F	<input type="checkbox"/>

Blom-Singer® StomSoft Laryngectomy Tubes are supplied in individual packaging.

LARYNGECTOMY TUBES

LARYNGOTEC® HME COMPATIBLE SILICONE TUBES

A soft, pliable, lightweight laryngectomy tube made from medical grade silicone.

The neck flange has been adapted to improve the fit with the neck anatomy.

The lateral openings for fixation of tube holder have been positioned to reduce chance of tearing.

The tube offers a transparent, inconspicuous design with a 22 mm adapter (KOMBI) for HME placement. A fenestrated option (LINGO) is also available.

Size	O.D neck Flange mm	I.D mm	Outer curve length mm	KOMBI Order ref		KOMBI LINGO Order ref	
7/44	10.2	7.2	44	14920-0744	<input type="checkbox"/>	14720-0744	<input type="checkbox"/>
7/62	10.2	7.2	62	14920-0762	<input type="checkbox"/>	14720-0762	<input type="checkbox"/>
7/65	10.2	7.2	65	14920-0765	<input type="checkbox"/>	14720-0765	<input type="checkbox"/>
8/44	11.2	8.2	44	14920-0844	<input type="checkbox"/>	14720-0844	<input type="checkbox"/>
8/62	11.2	8.2	62	14920-0862	<input type="checkbox"/>	14720-0862	<input type="checkbox"/>
8/70	11.2	8.2	70	14920-0870	<input type="checkbox"/>	14720-0870	<input type="checkbox"/>
9/44	12.4	9.4	44	14920-0944	<input type="checkbox"/>	14720-0944	<input type="checkbox"/>
9/62	12.4	9.4	62	14920-0962	<input type="checkbox"/>	14720-0962	<input type="checkbox"/>
9/75	12.4	9.4	75	14920-0975	<input type="checkbox"/>	14720-0975	<input type="checkbox"/>

Fahl LARYNGOTEC® Silicone Tubes are supplied in individual packaging. Sterile

LARYNGECTOMY TUBES

LARYNGOTEC® HME COMPATIBLE SILICONE TUBES STANDARD (KOMBI) AND KOMBI LINGO (FENESTRATED)

Size	O.D neck Flange mm	I.D mm	Outer curve length mm	KOMBI Order ref		KOMBI LINGO Order ref	
10/44	13.4	10.4	44	14920-1044	<input type="checkbox"/>	14720-1044	<input type="checkbox"/>
10/62	13.4	10.4	62	14920-1062	<input type="checkbox"/>	14720-1062	<input type="checkbox"/>
10/85	13.4	10.4	85	14920-1085	<input type="checkbox"/>	14720-1085	<input type="checkbox"/>
11/44	14.4	11.4	44	14920-1144	<input type="checkbox"/>	14720-1144	<input type="checkbox"/>
11/62	14.4	11.4	62	14920-1162	<input type="checkbox"/>	14720-1162	<input type="checkbox"/>
11/87	14.4	11.4	87	14920-1187	<input type="checkbox"/>	14720-1187	<input type="checkbox"/>
12/44	15.4	12.4	44	14920-1244	<input type="checkbox"/>	14720-1244	<input type="checkbox"/>
12/62	15.4	12.4	62	14920-1262	<input type="checkbox"/>	14720-1262	<input type="checkbox"/>
12/90	15.4	12.4	90	14920-1290	<input type="checkbox"/>	14720-1290	<input type="checkbox"/>
13/44	16.6	13.0	44	14920-1344	<input type="checkbox"/>	14720-1344	<input type="checkbox"/>
13/62	16.6	13.0	62	14920-1362	<input type="checkbox"/>	N/A	
13/90	16.6	13.0	90	14920-1390	<input type="checkbox"/>	14720-1390	<input type="checkbox"/>

Fahl LARYNGOTEC Silicone Tubes are supplied in individual packaging. Sterile

LARYNGECTOMY TUBE HOLDERS

LARYVOX® SIMPLY FIX

Tracheostomy/Laryngectomy tube holder with Velcro fastening

- For the secure fixation of tracheostomy/laryngectomy tubes and stoma buttons
- A discrete alternative to the Optiflauch® K tube holder
- Easily and quickly adjusted to the desired position
- An easy to use one piece system
- Box of 40 (20 pairs)

Order ref: 32680

☐


BRUSHES & ACCESSORIES

BLOM-SINGER® INDWELLING CLEANING BRUSHES

Brushes are designed to fit 16Fr. And 20 Fr.
Indwelling voice prostheses ONLY.

Order ref: IN 4064 4-8mm ☐

Order ref: IN 4065 9-16mm ☐

Order ref: IN 4066 18-22mm ☐



The Blom-Singer® Indwelling Cleaning Brush comes in packs of 3

The LARYVOX® Duo Brush

Intended for daily cleaning of the voice prosthesis: includes LARYVOX Clip to allow the fixation of the LARYVOX Stoma Light (Stoma Light sold separately).

Order ref: 29110-06 4-6mm ☐

Order ref: 29110-08 7-8mm ☐

Order ref: 29110-10 9-10mm ☐

Order ref: 29110-12 11-13mm ☐

Order ref: 29110-18 14-18mm ☐



The Laryvox® Duo Brush comes in packs of 6

The LARYVOX® Stoma Light

(Optional extra—not on prescription)

Order ref: 69101 ☐



ACCESSORIES

OPTICLEAR® ADHESIVE REMOVER

An adhesive remover wipe for laryngectomised patients.

Aids the removal of base plate adhesives from the skin around the stoma.

A large non-woven cleaning wipe, soaked in an alcohol-based cleaning solution.

All adhesive residues are quickly and gently removed from the skin and absorbed by the wipe.

Order ref: 33500, Box of 30 ☐



OPTIGARD® PROTECTIVE DRESSING WIPES

A preparative skin care wipe for laryngectomised patients when using base plates or additional skin adhesives.

Helps to protect against irritation to the skin around the stoma, which can be caused by skin adhesives.

Increases the adhesive power of the base plate adhesive.

Easily applied to clean skin: the skin is covered with a thin protective film which dries after a few seconds.

When changing a base plate the film does not necessarily have to be removed but it can be easily washed off.

Order ref: 33600, Box of 30 ☐



TRACHEOSTOMY

DURATWIX® TRACHEOSTOMY TUBES

The Duratwix range of tracheostomy tubes from Andreas Fahl offer the next generation of solutions for airway management and respiratory care and are now available on prescription. Duratwix tracheostomy tubes are available in two lengths and are supplied with two inner cannulas as standard, one with a fixed 15mm connector (UNI) and the second inner cannula with a rotary 15mm connector (VARIO), designed to move with any connected tubing without disturbing the stability of the outer tube. Duratwix tubes are available in combinations of cuffed (CUFF) or uncuffed, fenestrated (LINGO) or unfenestrated options.

A number of patented features make this the tube of choice for optimal tracheostomy care in all clinical environments, from intensive care to the home care setting. These features include:

- The Rotatwix Neck flange - the 360 degree rotation of the soft neck flange allows it to adapt to motion of the head and neck without concurrent movement of the tracheostomy tube, helping to reduce irritation to the trachea.
- The Aspilo fenestrations - a new innovation in tracheostomy technology with fenestrations drilled diagonally to create a smooth outer surface, to reduce the potential for tracheal irritation and formulation of granulation tissue and to limit the potential risk of aspiration of secretions from the upper respiratory tract.
- The Mucoprotect cuff - a soft and pliable, thin walled cuff designed to conform to the tracheal wall, to minimise the risk of aspiration and reduce the risk of trauma and irritation.

TRACHEOSTOMY

DURATWIX® UNI-VARIO

Size	O.D neck Flange mm	I.D. mm	Length mm standard	Uni-Vario Standard Order ref		Length mm short	Uni-Vario Short Order ref
6	11.9	6.0	82.0	19211-06	<input type="checkbox"/>	-	-
7	11.9	7.0	82.0	19211-07	<input type="checkbox"/>	72.0	19212-07 <input type="checkbox"/>
8	12.5	8.0	85.0	19211-08	<input type="checkbox"/>	75.0	19212-08 <input type="checkbox"/>
9	13.7	9.0	88.0	19211-09	<input type="checkbox"/>	78.0	19212-09 <input type="checkbox"/>
10	15.0	10.0	91.0	19211-10	<input type="checkbox"/>	81.0	19212-10 <input type="checkbox"/>

DURATWIX® UNI-VARIO LINGO

Size	O.D neck Flange mm	I.D. mm	Length mm standard	Uni-Vario Standard Order ref		Length mm short	Uni-Vario Short Order ref
6	11.9	6.0	82.0	19261-06	<input type="checkbox"/>	-	-
7	11.9	7.0	82.0	19261-07	<input type="checkbox"/>	72.0	19262-07 <input type="checkbox"/>
8	12.5	8.0	85.0	19261-08	<input type="checkbox"/>	75.0	19262-08 <input type="checkbox"/>
9	13.7	9.0	88.0	19261-09	<input type="checkbox"/>	78.0	19262-09 <input type="checkbox"/>
10	15.0	10.0	91.0	19261-10	<input type="checkbox"/>	81.0	19262-10 <input type="checkbox"/>

TRACHEOSTOMY

DURATWIX® UNI-VARIO CUFF

Size	O.D neck Flange mm	I.D. mm	Length mm standard	Uni-Vario Standard Order ref	Length mm short	Uni-Vario Short Order ref
6	11.9	6.0	82.0	19611-06	-	-
7	11.9	7.0	82.0	19611-07	72.0	19612-07
8	12.5	8.0	85.0	19611-08	75.0	19612-08
9	13.7	9.0	88.0	19611-09	78.0	19612-09
10	15.0	10.0	91.0	19611-10	81.0	19612-10

DURATWIX® UNI-VARIO LINGO CUFF

Size	O.D neck Flange mm	I.D. mm	Length mm standard	Uni-Vario Standard Order ref	Length mm short	Uni-Vario Short Order ref
6	11.9	6.0	82.0	19661-06	-	-
7	11.9	7.0	82.0	19661-07	72.0	19662-07
8	12.5	8.0	85.0	19661-08	75.0	19662-08
9	13.7	9.0	88.0	19661-09	78.0	19662-09
10	15.0	10.0	91.0	19661-10	81.0	19662-10

TRACHEOSTOMY

TRACHEAL COMPRESSES

Description	Unit/pcs	Size	Order ref
SENSOTRACH® Alu Slit	10	8 x 10 cm	30030

Tracheal compresses with aluminium coating to reduce adhesion of the compress to skin around the tracheostoma. SLIT coding indicates the presence of an off-centre slit for easy exchange while the tracheostomy tube is in-situ.

SENSOTRACH® Duo Slit	10	9 x 9.8 cm	30609
----------------------	----	------------	-------

High-quality tracheal compresses with a rounded shape for improved fit and maximum comfort. DUO provides a two layer compress, designed for patients with moderate secretion production: the layer close to the skin – marked by a green thread - effectively absorbs secretions and transfers them to the peripheral layer. This keeps the skin dry and warm.

SENSOTRACH® Uno Slit	10	9 x 9.8 cm	30521
----------------------	----	------------	-------

High-quality tracheal compresses with a rounded shape for improved fit and maximum comfort. UNO provides a single-layer compress, designed for patients with minimal secretion production.

SENSOTRACH® Uno Ped Slit	10	6 x 7 cm	30523
--------------------------	----	----------	-------

High-quality tracheal compresses with a rounded shape for improved fit and maximum comfort. UNO provides a single-layer compress designed for patients with minimal secretion production. Smaller (6.0 x 7.0cm) size variant for paediatric care (PED)

SENSOTRACH® Duo Ped Slit	10	6 x 7 cm	30623
--------------------------	----	----------	-------

High-quality tracheal compresses with a rounded shape for improved fit and maximum comfort. DUO provides a two layer compress, designed for patients with moderate secretion production: the layer close to the skin – marked by a green thread - effectively absorbs secretions and transfers them to the peripheral layer. This keeps the skin dry and warm. Smaller (6.0 x 7.0cm) size variant for paediatric care (PED)



SENSOTRACH® Alu Slit 8 x 10 cm



SENSOTRACH® Uno Slit 9 x 9.8 cm

HME CASSETTES — TRACHEOSTOMY

LARYVOX® O2 HME

- LARYVOX® O2 HME provides an individual with a tracheostomy with the unique combination of LARYVOX® Heat & Moisture Exchange cassette (HME) with an O2 connection, ideal for the individual who requires supplementary oxygen.
- LARYVOX® O2 HME features the Fahl Multi-Adapter that fits on all 15 mm tracheostomy inner cannula connectors.
- LARYVOX® O2 HME provides an excellent level of heat and moisture exchange, designed to reduce mucus production, coughing and chest infections. 24 hour use also helps to improve sleep and reduce levels of fatigue in patients post tracheostomy insertion.
- Fahl LARYVOX® O2 HME come boxed in pks of 30. Non-Sterile.

Order Ref: 49802, Box of 30



HUMIDOTWIN® HME

A Heat & Moisture Exchange (HME) filter cassette.

- HUMIDOTWIN® HME features the Fahl Multi-Adapter that enables placement on all 15 mm tracheostomy inner cannula connectors, as well as in all laryngectomy 22 mm housings commonly used in baseplates, laryngectomy tubes and stoma buttons.
- The foam filter is made from an open pore, polyurethane.
- HUMIDOTWIN® HME is low profile, light-weight and inconspicuous.
- HUMIDOTWIN® HME also features an overpressure valve to enable unimpaired coughing.
- Fahl HUMIDOTWIN® HME come boxed in pks of 30; cassettes are individually packed in convenient peel-packs. Non-Sterile.

Order ref: 46460, Box of 30



HME CASSETTES — TRACHEOSTOMY

HUMIDOPHONE® PLUS SPEAKING VALVE

- A novel single-use, closed bias disposable Tracheostomy Speaking Valve with an integrated Heat & Moisture Exchange (HME) filter.
- This low profile, lightweight speaking valve contains an open-pore, polyurethane HME filter, with a hydrophilic coating to aid moisture retention.
- Pack Size: A box of 30; individually wrapped.

Order ref: 46487 Box of 30



COMBIPHON® SPEAKING VALVE

A sterile speaking valve - transparent, lightweight, with a silicone "closed-position valve"— opens during inhalation and requires no enhanced exhalation pressure to close the valve and to facilitate speaking.

With multi-adapter: fits to both 15 mm connector (UNI) and 22 mm adapter (KOMBI).

To be used by tracheotomised patients, not to be used by laryngectomised patients.

To be used only and exclusively in combination with a phonation cannula.

Packaged individually. Sterile

Order ref: 27131



TRACHEOSTOMY—TUBE HOLDERS

LARYVOX® SIMPLY FIX

Tracheostomy/Laryngectomy tube holder with Velcro fastening

- For the secure fixation of tracheostomy/laryngectomy tubes and stoma buttons
- A discrete alternative to the Optiflausch® K tube holder
- Easily and quickly adjusted to the desired position
- An easy to use one piece system
- Box of 40 (20 pairs)

Order ref: 32680



OPTIFLAUSCH® K 24-45cm

A Tracheostomy Tube Holder with Velcro fastener.

- Assures the secure fixation of tracheostomy tubes.
- Constructed of a foam core surrounded by soft non-woven fabric.
- A wide, soft tube holder for improved comfort, measures approx. 4 mm thick and 2.5 cm wide.
- The velcro fastener enables it to be easily and quickly adjusted to the desired neck size (2 parts, adjustable).
- White colour.
- Packaged individually

Order ref: 32550



TRACHEOSTOMY—TUBE HOLDERS

OPTIFLAUSCH® K PED 16-25cm

A Paediatric Tracheostomy Tube Holder with velcro fastener.

- Assures the secure fixation of tracheostomy tubes.
- Constructed of a foam core surrounded by soft non-woven fabric.
- A wide, soft tube holder for improved comfort, measures approx. 4 mm thick and 2.5 cm wide.
- The velcro fastener enables it to be easily and quickly adjusted to the desired neck size (2 parts, adjustable).
- White colour.
- Packaged individually

Order ref: 32555



NECKFIX® DUO K 40-53cm / 3.5cm wide

A Tracheostomy Tube Holder with Velcro fastener.

- Assures the secure fixation of tracheostomy tubes.
- Constructed of a foam core surrounded by soft non-woven fabric.
- A two-part tube holder is pleasantly soft and flexible. And can be adjusted to different neck sizes.
- White colour.
- Packaged individually

Order ref: 32630



WORKING WITH INDEPENDENT DACS

Severn Healthcare believes that a Dispensing Appliance Contractor (DAC) should be independent from any manufacturer, to ensure true impartiality in the supply of appliances and services to patients. With this in mind, Severn Healthcare is delighted to endorse [Homecare from NWOS](#), [Fittleworth](#) and [Patient Choice](#). These companies have kindly outlined their services for your reference:

Fittleworth

We have been dispensing specialist products since 1984 and are pleased to introduce our free home dispensing service for tracheostomy and laryngectomy medical appliances. Our service is discreet, convenient and reliable and tailored to meet all of your requirement.

- Delivery to any UK address from 38 care centres throughout the UK from Plymouth to Edinburgh
- You can order through Fittleworth in five ways: by post, by text, by phone, email and online
- We accept Electronic Prescriptions (EPS), so there is no need to call, we do it all for you
- We stock all major manufacturer appliances, ensuring excellent stock availability
- Nurse specialists are available to provide free advice and support
- We are open five days a week: Monday to Friday 9am to 5pm
- Overseas emergency cover—World Assist Alliance

If you would like to find out more or register please contact us on:

Freephone: 0800 077 8834

Text: 07800 005658

Email: orders@fittleworth.com

Web: <http://www.fittleworth.net/respiratory>

WORKING WITH INDEPENDENT DACS

Homecare from NWOS

Homecare from NWOS is committed to providing the laryngectomy and tracheostomy care market with the service and benefits of an independent DAC. To ensure independence, NWOS partner with all major companies supplying tracheostoma care products to the UK laryngectomy community, providing clinicians and patients with a wide range of choice to meet all their needs.

For more information about NWOS, visit: <http://www.Homecarenwos.co.uk/>

Patient Choice

Patient Choice provides a fast and efficient home delivery service for all your prescription appliances.

You can expect all the usual NHS prescription services, such as free and discreet delivery to your home or work and a repeat prescription collection, and because we are completely independent you can be assured of a fully impartial service regardless of the products you use.

To place an order just contact us via:

Freephone: 0800 862 0686

Email: orders@patientchoice.net

Website: patientchoice.net