

NEW!



Day&Night™ HME

Tired of changing the HME to adjust to activity level?

One HME that fits your lifestyle

Love the Simplicity. Love the innovation.



- InHealth Technologies® newest innovation that you can wear comfortably all day and all night – including at bedtime.
- Offered in two breathability choices for your comfort and activity level:
 - ClassicFlow® or EasyFlow®
- Beautifully translucent and non-reflective for a natural look.
- Specially designed to attach to the entire family of InHealth baseplates, tubes and buttons.



Blom-Singer® Day&Night™ HME with ClassicFlow® HME

Helps assure you breathe warmed, filtered and humidified air - every day - to reduce respiratory symptoms after a total laryngectomy. ClassicFlow® is designed for increased moisture retention and resistance.

Blom-Singer® Day&Night™ HME with EasyFlow® HME

The foam filter is more porous than the ClassicFlow®. This allows you to breathe more freely to match your activity level and pulmonary needs.

Pack of 30 Product order code: BE1091

Pack of 30 Product order code: BE1092



Baseplate Placement Tips

Placing an Adhesive Tracheostoma Baseplate

Step 1 Clean

Gently clean the skin around the tracheostoma with mild soap and warm water. Rinse and completely dry the skin.

Step 2 Remove

Remove adhesive baseplate from backing

Step 3 Find your centre

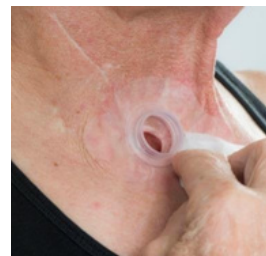
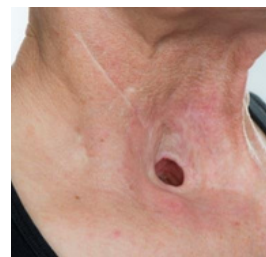
In most cases, try to centre the housing directly over the stoma and as close to the stoma as possible with placement.

Step 4 Press

Working from the inside of the baseplate / stoma to the outside, gently press the adhesive down around the stoma, using fingers to massage out any folds, creases or bubbles.

Step 5 Remove

To remove baseplate, consider using a Remove Wipe. Wipe the Remove wipe around the outside edges of the baseplate and slowly peel the edges of the baseplate back until housing is entirely off.



Extra Tips:

- The closer the baseplate to the stoma, the better
- With deep-set stomas, consider "folding" the baseplate on
- Massage the baseplate from inside -> out
- Warm the baseplate with body heat prior to application
- Patient must be able to replicate. Have patient, or have the family take a photo to help with independent placement.



Wipes and Extras

- Extra Stick: Silicone Glue & Adhesive tape discs
- Skin Irritation: Skin prep / barrier wipes
- Oily Skin: Alcohol Wipes
- Difficulty removing: Remove Wipes

